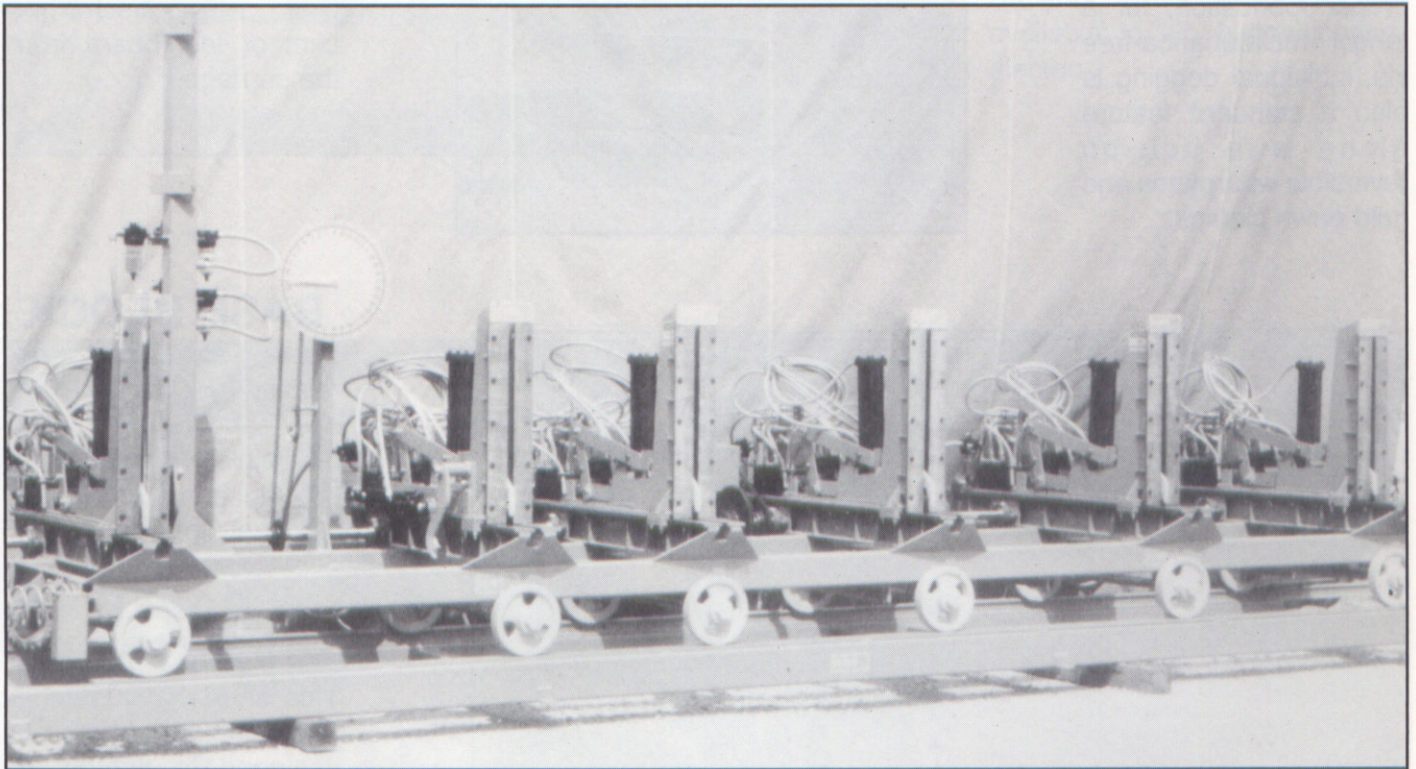


# MONTGOMERY FR<sup>series</sup> CARRIAGES



## Montgomery Automatic Carriage – made to order to meet your needs

### Standard Equipment:

- All steel carriage construction
- 36", 40" or 44" headblock opening
- Reversible replaceable wearplates
- Heavy tubular steel frame
- Ratchet style cable tightener
- 0-4" variable tapers
- 8 cam type sets
- Individual dog cut outs
- Electrical Safety limits
- Easy read 24" dial
- Wrap around hold down clamps
- Double tapered roller bearings in the wheels
- Automatic mist oiling of blocks, wheels & track

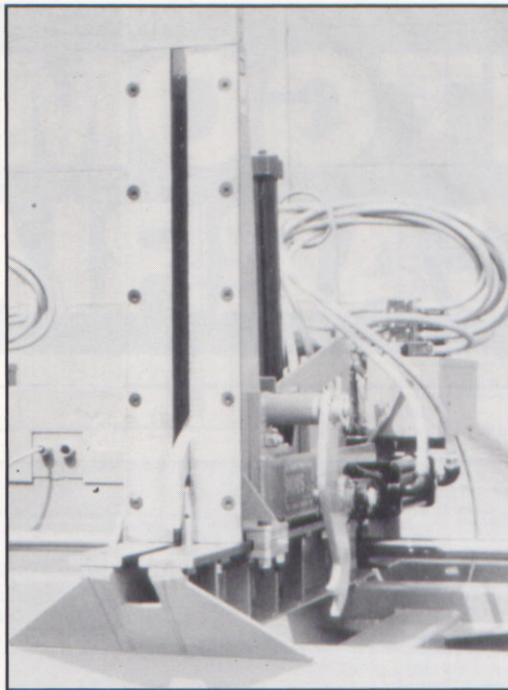
### Options:

- Air, hydraulic, electric network drives
- Drive motor 3 to 7½ HP
- 10" wheels
- Cant flipper kickers
- Hammer dogs
- Taper limits
- Computer networks
- Air or hydraulic dogs.



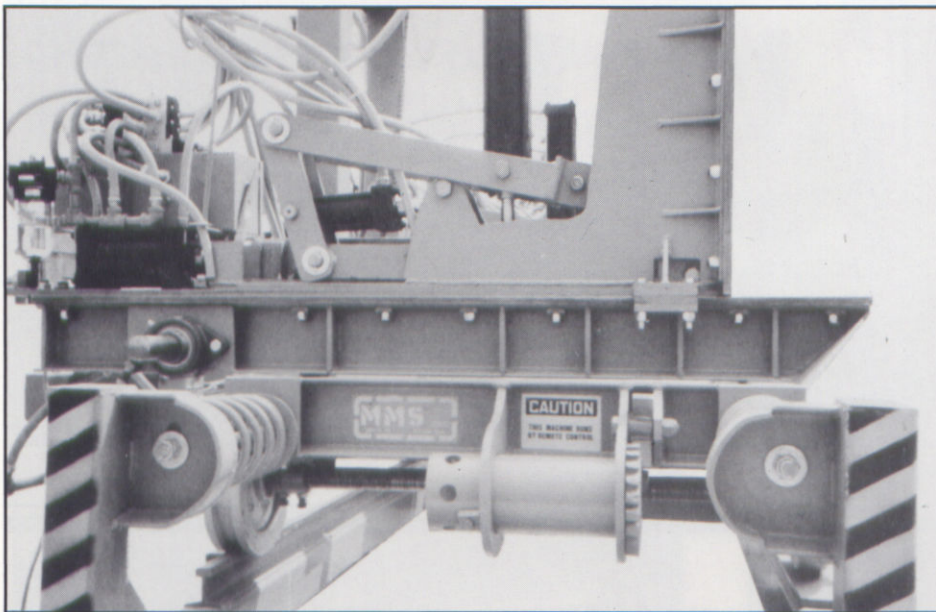
## MONTGOMERY DOG

Over 20 years ago, these dogs were designed and patented with effective sawing in mind. The whole knee moves out with no loss of dogging on a 0" to 4" variable taper. The dog features the ability to hold a 1 inch board and individual oilers to insure proper lubrication, for a longer maintenance-free life. Individual dogging is also a standard feature along with bolt-on reversible wearplates and hold-down clamps.



## CANT FLIPPER KICKER

The Montgomery cant flipper kicker attaches easily to any existing headblock. It is push button operated from the sawyer's position. It will flip either log or cant forward (face down) for the next cut, thus eliminating excess log turner time. Also discharges cant or last board from the carriage.



## BASE BLOCK

Heavy structural steel reinforced where necessary, and with bolt on reversible wearplates, it makes a very rugged long-lasting base.

## CABLE TIGHTENER

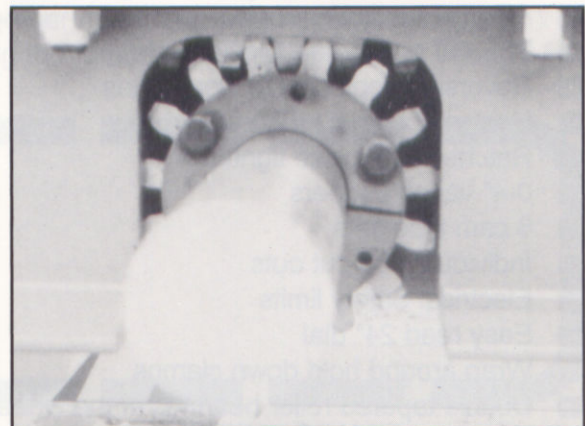
This short notch ratchet style cable tightener is designed to tighten up when others can't. The large reel allows the cable to roll on and off smoothly with no sharp bends to weaken or cut the cable, thus prolonging cable life.

## ↑ TRACK AND WAYS

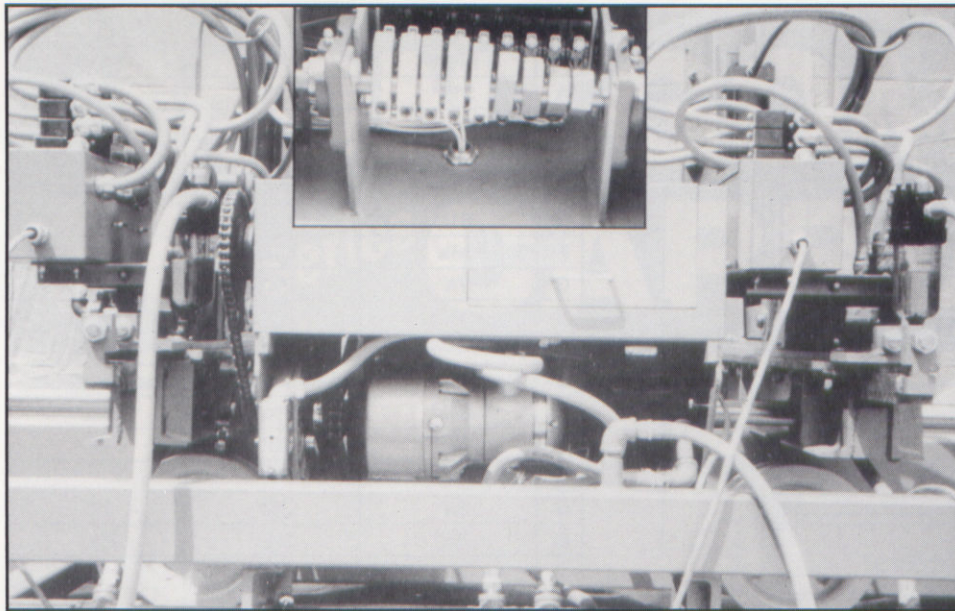
Heavy tubular steel construction and heavy duty cable sheaves make a rugged combination. Available as an option is heavy coil spring end stops with either a closed end or open end as shown.

## ACCURACY →

QD type bushings on our pinions won't slip, which means accurate lumber and less wear for years of precise movements. The machined steel rack and pinion form a true mesh which means minimal friction, for fewer maintenance adjustments and a longer life. Unlike a chain system, our rack does not stretch creating uniform sets across the blocks.





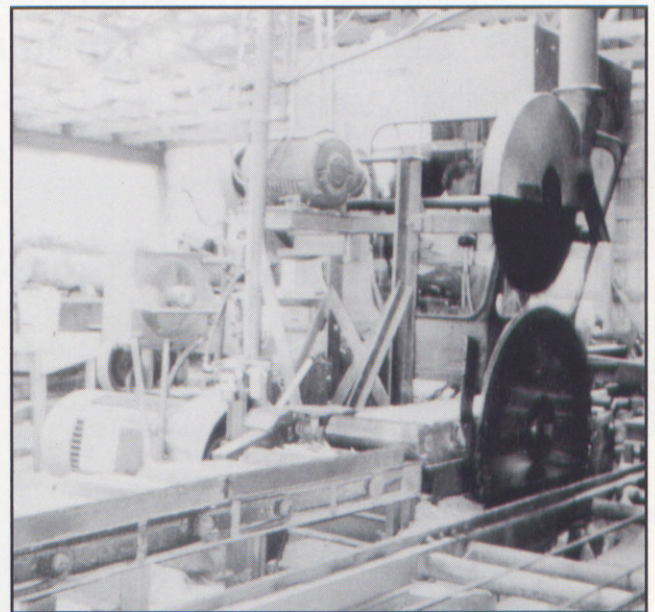
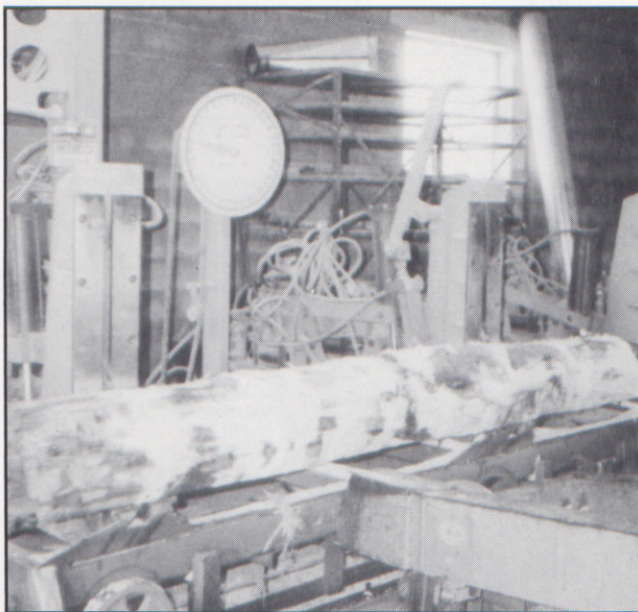


## NETWORKS

Montgomery networks are a rugged compact unit with 8 cam style presets easily adjusted. Proven accurate over the decades, an easy read 24" dial is standard.

Montgomery's digital networks, with digital readouts inside the sawyers cab for accuracy in the thousandths.

Network drive systems are available in air, hydraulic and electric.



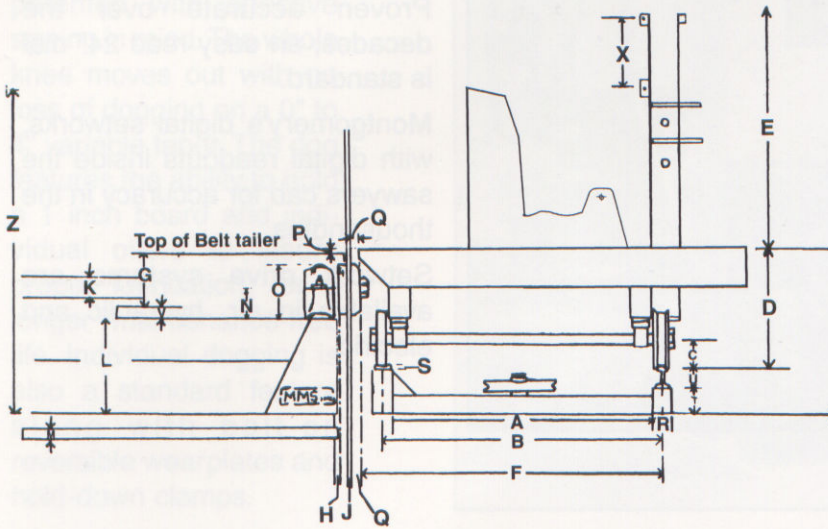
## TOP SAW AND HAMMER DOG

When big logs give you a problem, we have the answer. Our top saw enables you to use smaller, less expensive easy-to-handle saws. Our hammer dog holds the log in place while you saw and mounts on any existing headblock. Or order them with your carriage.



## STANDARD SPECIFICATIONS

Dogs Retracted (in)	5/8"
Dogs Extended (out)	3 5/8"
Carriage lengths	10', 15', 20'

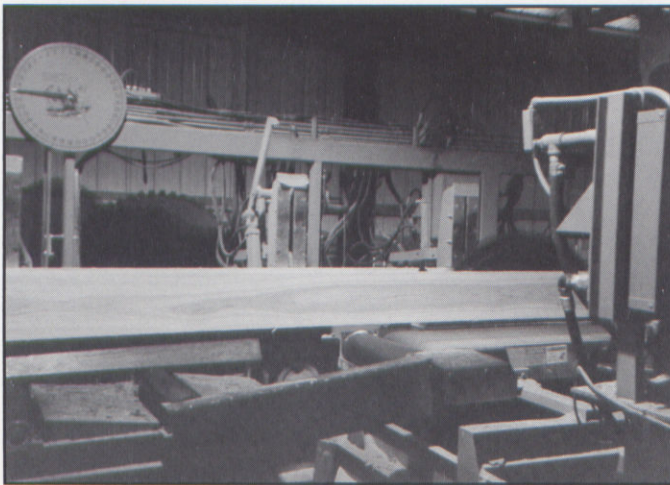


## INSTALLATION MEASUREMENTS

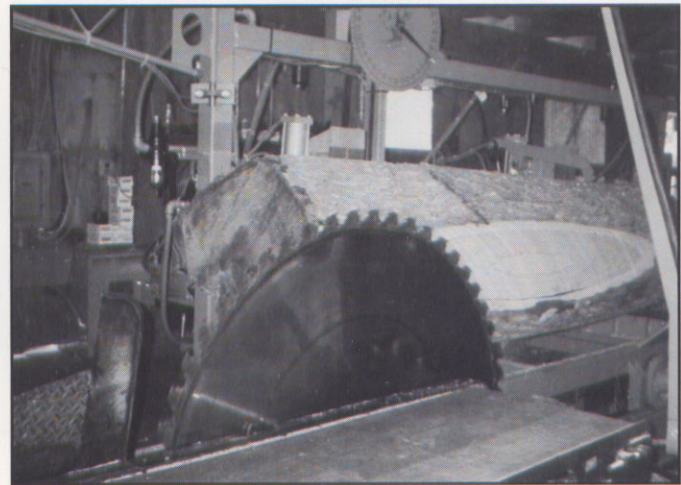
	FR36	FR40	FR44
A	31 1/2"	35"	40 1/4"
B	34 5/8"	38"	44 1/4"
C	4"*	4"	5"
D	17"*	17"*	18"
E	61"*	61"	62"
F	38"	42 3/8"	47"
G	7 3/4"	7 3/4"	7 3/4"
H	1 1/8"	1 1/8"	1 1/8"
I			
J	Saw thickness	Saw thickness	Saw thickness
K	2 1/16"	2 1/16"	2 1/16"
L	13"*	13"	14"
M			
N	3 3/4"	3 3/4"	3 3/4"
O	7 7/16"	7 7/16"	7 7/16"
P	3/4"	3/4"	3/4"
Q	5/8"	5/8"	5/8"
R	3"	3"	3"
S	1/2"	1/2"	1/2"
T	4"	4"	4"
U	2 1/2"	2 1/2"	2 1/2"
V	2"	2"	2"
W			
X	23 1/2"	23 1/2"	23 1/2"
Y	55" min.	55" min.	55" min.
Z	60 1/2"*	60 1/2"*	61 1/2"

\*10" wheels add 1"

Other equipment available:  
Husks, sawyer cabs, hydraulic feeds, portable mills



**FR40** hydraulic carriage at service in Clearville, PA. Montgomery hydraulic carriages are designed for performance and ease in future maintenance.



**FR40** air carriage working Saxton, PA. Montgomery pneumatic carriages have been serving the lumber industry for over 30 years.

**PARK** Manufacturing, Inc.  
860 New Park Road  
New Park, PA 17352

ph: 717-382-1334  
fx: 717-382-1462

[www.montgomerymill.com](http://www.montgomerymill.com)



AUTHORIZED DEALER